

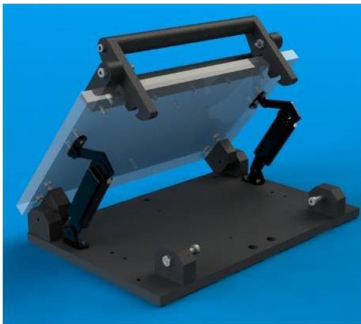
FUNCTIONAL FIXTURES

Modular Boxes



- Manufactured from 16 Ga Steel
 - Painted Belge with textured surface
 - All Stainless Hardware
 - U-handles for easy lifting
 - Reinforced Main Hinge using trusted ECT design
 - Choice of Gas Springs or Mechanical Spring Hinges
 - Rubber Feet
 - Spring Latch on Front
 - Capability to screw down and lock the lid to prevent tampering
 - Sizes available to match ECT Vacuum Wells
 - Multiple Heights Available
-

Single Action Low-force Gates



- Updated product based on the classic design
 - Improved Hinges
 - All stainless hardware
 - Improved Manufacturability with more shared parts and fewer machine operations
 - Designed to easily work with the new Modular Boxes from ECT
 - Also available for ICT applications
 - Lexan lid for good visibility and accessibility of the UUT
 - Available in many standard sizes:
 - 12 Wide x 8 Deep
 - 16 Wide x 12 Deep (Matches MMS)
 - 20 Wide x 16 Deep (Matches MMM)
 - 24 Wide x 20 Deep
 - 30 Wide x 20 Deep (Matches M2030)
 - Standard Sizes hinge on long side
 - Short side hinging available as special-order
 - Additional Sizes available or can be easily custom built
 - Hinoes or Gas Shocks Available
-

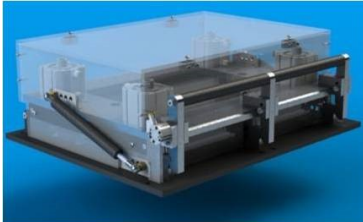
Linear Mechanical Gate



- Probe Plate Mounting
 - For use a Linear Press-Down Gate with Mechanical Probe Actuation
- Top Plate Mounting
 - For use as a Linear Hold Down Gate for Vacuum Actuation
- Recommended usage with a Stripper Plate
- Manual Actuation
- Linear Movement
- Top Side Probing Capable
- All Stainless Hardware
- 3 Standard Sizes
 - Size indicates Footprint
 - Contact inside Sales for specific application considerations
 - 16 Wide x 12 Deep (UUT: 19.2 x 3.2)
 - 20 Wide x 16 Deep (UUT: 13.2 x 7.2)
 - 24 Wide x 20 Deep (UUT: 17.2 x 11.2)

FUNCTIONAL FIXTURES

Linear Pneumatic Gates



- Probe Plate Mounting
For use a Linear Press-Down Gate with Automated Probe Actuation
- Top Plate Mounting
For use as a Linear Hold Down Gate for Vacuum Actuation
- Recommended usage with a Stripper Plate
- Automated Actuation with Pneumatics
- Linear Movement
- Top Side Probing Capable
- Dual-Stage Capable
- Pneumatic Anti-Open Mechanism

All Stainless Hardware

3 Standard Sizes

Size indicates Footprint

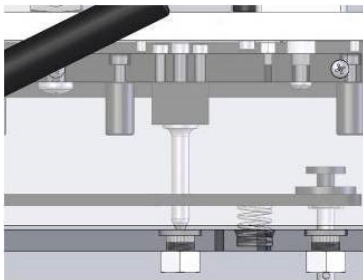
Contact inside Sales for specific application considerations

16 Wide x 12 Deep (UUT: 19.2 x 3.2)

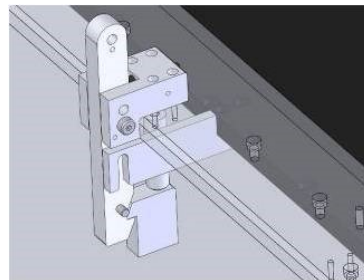
20 Wide x 16 Deep (UUT: 13.2 x 7.2)

24 Wide x 20 Deep (UUT: 17.2 x 11.2)

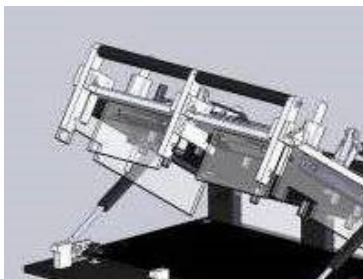
Standard Features



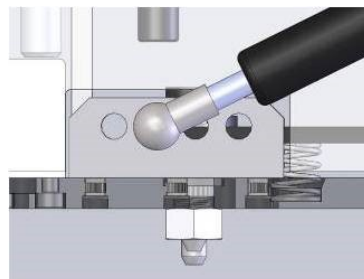
- Alignment Pin



- Anti-Open Mechanism for the Mechanical Gate



- Finger Safe Safety Covers



- Adjustable Gas Spring Brackets